

The information provided here is for informational and educational purposes and current as of the date of publication. The information is not a substitute for legal advice and does not necessarily reflect the opinion or policy position of the Municipal Association of South Carolina. Consult your attorney for advice concerning specific situations.



Growing The Acres

SINCE 2021... **35+** NEW AND UPDATED LOCAL BUSINESSES

- Duhgd#DkchwfF oxe##
- Qr#Q dp h Ghcl
- Urrw#dqwhj udwlyh P hg lflq#
- Frwdj h#) Y lqh
- Vnlq dgg Eur z v Unghilqhg ##
- xsgdwhg, #Fk lfn oikoo
- \rj dVl{
- : Euhz
- Vclp Fk lfnhqv
- Kdqgho#K rp hp dgh lfh# uhdp
- Euhqwz rrg #W rz qk rp hv##
- WudlqKrx}
- P roe#Y lqr#Z lqh#E du
- Srrj dq#V Vrxwkhug N lwkqh
- N xg }x #E dnhu|#) #E dunhw##
- Ohyho I lqh hvv
- M#uhz I dfwru|
- Wdnrvxvkl
- FR
- Fk lfnhg#Vdadg Fk lfn#
- Wkur z edfn#K xwz rvw##
- Edwk#) #Erg|#Z runv##
- Fuxp eol#rrn lhv#
- Fdyd
- Y lfkxv#E lvfxlw
- Vhskrud
- Krp hJ rrgv#
- G xfn#G xfn Jrrvh
- Oh{ lqj wrq P hg lfo Sdun B ID
- Subrp d#K hdo#K u j hqw#F duh
- Fulfnh#Q hz p dq #G hv l j qv#
- lfhEr { Fu|rwkhuds|
- N lq#W dug hq##
- xsgdwhg, G xqnlq##
- xsgdwhg, Sxed{



Awards

A+



Judgh# | Q lfkhlfrp

Ehvw
Qh l jkerukrrg



Ehvw
Qh l jkerukrrg



Ehvw#Qh l jkerukrrg##
Ehvw#Vkrss lqj G lvwalfw
EhvwQhz Krp h Frp p xqlw|

5



Forest Acres City Limits

A map of Forest Acres, South Carolina, showing city limits and various colored zones. The map includes a legend in the bottom right corner with the following categories: Forest Acres, Single-Family Residential, Medium-Density Residential, High-Density Residential, Commercial, Industrial, and Public Use. The map also shows a large body of water in the center and a street grid throughout the area.The logo for Forest Acres, featuring a stylized green tree icon to the left of the text "FORESTACRES" in a bold, sans-serif font.

Annexation Quick Facts

A recent analysis found city properties make up 75% of the homes within Forest Acres. That means 75% are carrying 100% of the expenditures for the amenities we all use and love.

The other 25% of properties within our boundary that remain in a doughnut hole, send 100% of their tax dollars to Richland County which pays for projects in Sandhills or Lower Richland County.

That equals around \$450,000 dollars that could stay local to contribute to local issues and local amenities but doesn't.



Public Meeting



How Do I Join Forest Acres?

- Through a process called **annexation**.
- This is where unincorporated Richland County property is moved into the City of Forest Acres. Many of the white parcels on the map are properties within our city limits that can be annexed - some faster than others. These parcels are known as donut-holes.

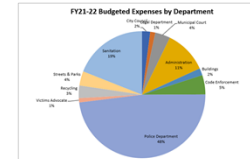


Can I Annex?

- State Law only allows properties that are contiguous to our current borders to be annexed (or currently touching our boundary line).
- The property must also not be part of another municipality.
- Streets can come in together to speed up the process.



Where Your Tax Money Goes



Benefits of Annexation

Free City services such as garbage, recycling, and yard debris collection and localized police protection.

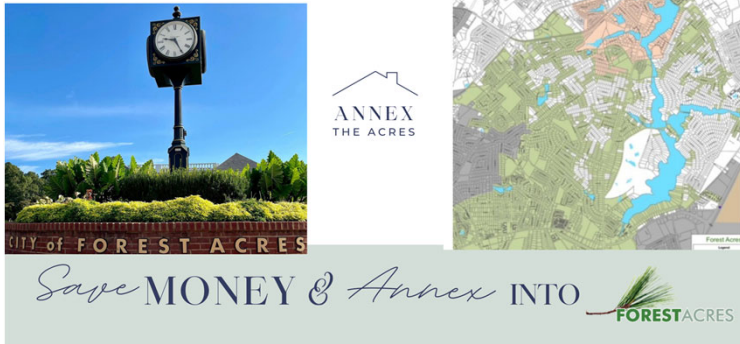


Tax Comparison

Category	Forest Acres (\$1593.05)	Richland County (\$1744.77)
Police	0%	15%
Fire	0%	15%
Public Works	0%	25%
Public Safety	0%	10%
Community Development	0%	5%
Administration	0%	5%
Other	0%	5%
Forest Acres	100%	0%



Annex the Acres Campaign



A graphic for the Annex the Acres Campaign. It features a photograph of a clock tower on the left, the 'ANNEX THE ACRES' logo in the center, and a map of the area on the right. Below these elements is a banner with the text 'Save MONEY & Annex INTO' followed by the 'FOREST ACRES' logo.

Annex the Acres Website



A screenshot of the Annex the Acres website. On the left is a 'RESIDENT SERVICES' menu with links: 'Am I In the City?', 'Join Forest Acres', 'News & Announcements', 'Report A Concern', and 'Trash & Recycling'. To the right is the 'Annex The Acres' title, the website URL 'forestacres.net/annextheacres', and the same graphic as the previous slide. At the bottom is a banner with the text 'Save MONEY & Annex INTO' followed by the 'FOREST ACRES' logo.

Annex the Acres Website

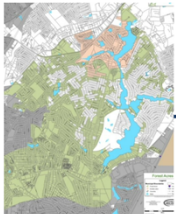
WHY ANNEX INTO FOREST ACRES

Help us take Forest Acres from great to elite.

We can better our community's lifestyle by giving an improved population count when applying for grants. From parks to roadways, numbers talk, and accuracy matters.

Our true population is believed to be greater than the 10,000 captured on our recent 2020 census.

We could have as many as 12,000-15,000 which is nearly the same population as Cayce and not far off from West Columbia.



You live here but doughnut holes, or properties in white that are unincorporated, make it impossible for us to reflect our more accurate population when applying for grants.

That affects what money we get at the state level and also what grants we can apply for based on our qualifying population. This impacts public money that could be available to improve our roads, try to build sidewalks, make park improvements, the list goes on.

DOUGHNUT HOLES IMPACT DAILY LIFE FOR ALL

Doughnut holes leave us all with missed opportunities and promote inefficiency in government.

A recent analysis found city properties, shown in green on the municipality map, make up 75% of the homes within Forest Acres. That means 75% are carrying 100% of the expenditures for the amenities we all use and love.

The other 25% of properties within our boundary that remain in a doughnut hole, send 100% of their tax dollars to Richland County which pays for projects in Sandhills or Lower Richland County.

That equals around \$450,000 dollars that could stay local to contribute to local issues and local amenities but doesn't.

Annex the Acres Website

ANNEXATION SAVES MOST HOMEOWNERS MONEY

Annexation will save 80% of our unincorporated homes money on property taxes.

That's right. 80% of these homeowners would see a **property tax reduction** and *keep all of their money here at home.*

Here is a rough estimate of the savings:

\$175,000 taxable value equals a yearly savings of \$196.22 through annexation.

\$275,000 taxable value equals a yearly savings of \$108.02 through annexation.

\$375,000 taxable value equals a yearly savings of \$19.82 through annexation.

Annexation also affords you superior and truly responsive sanitation and police services.

Annex the Acres Website

HELP US MAKE YOU SAFER BY ENDING THE JURISDICTIONAL CIRCUS FOR POLICE

Help our police with enforcement by allowing them to patrol the entire city and end the jurisdictional circus that impacts everything from speeding enforcement and your family's safety.

Also, our police response times average 10 minutes faster than the county.

We are centrally located and have an average response time of under three minutes. Conversely, the county sheriff's department has a response time of 12 minutes or more and is currently in charge of protection services for 1500 homes inside Forest Acres.

That matters when seconds count. This is inefficiency in government at its finest.

Help us fix what lawmakers have neglected to do.

Help us make you safer. Help us save you money. Help us end inefficiency in government - *and help us make your city the best it can be.*

Annex the Acres Website

ANNEXATION TIMELINE

Overview Powerpoint

To annex, all you need to do is drop a copy of your property deed at City Hall (5209 N Trenholm Road) or email a digital copy to mqueen@forestacres.net.

From there, the city will handle the rest which includes a public notice and two public hearings held before regularly scheduled city council meetings.

The entire process takes about three months. On the night of the second public hearing, the council will vote to approve the property annexation. City staff handles all publicly required notifications and your trash can will be delivered within the week. Welcome Home!

Frequently Asked Questions About Annexation


Would my mailing address change?

Would annexation change which school my child is zoned for currently?

Will there be a change in my Water/Sewer service?

Why does Forest Acres encourage annexation for contiguous properties?

Annex the Acres Postcards

Save MONEY & Annex INTO 

Annex the Acres Postcards

Help us take Forest Acres from great to *elite*.

We can better our community's lifestyle by giving an improved population count when applying for grants. From parks to roadways, numbers talk, and accuracy matters.




Did you know we have nearly as many residents as Cayce? You live here - but donut holes make it impossible for us to reflect our more accurate population when applying for grants.

Plus...

Help our police with enforcement by allowing them to patrol the entire city and end the jurisdictional circus that impacts everything from speeding enforcement and your family's safety. Also, our police response times average 10 minutes faster than the county. That matters when seconds count.

This is inefficiency in government at its finest. Help us fix what lawmakers have neglected to do.

Help us make you safer - and help us make your city the best it can be.

Assessed Tax Value	ANNEX THE ACRES	Estimated Tax Savings
\$175,000		\$196.22
\$275,000		\$108.02
\$375,000		\$19.82



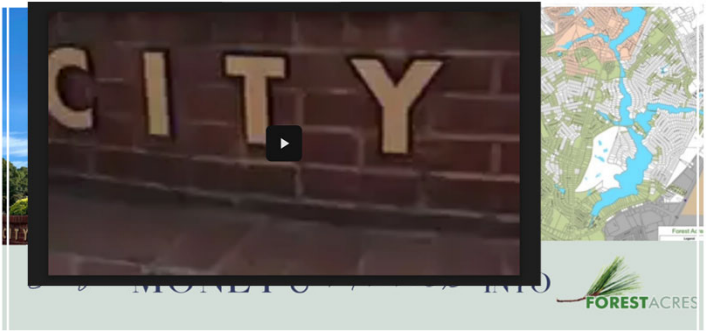
We only need one document and we do the rest in just three short months. Scan this code to learn more!

Annex the Acres Video

- RESIDENT SERVICES
- Am I In the City?
- Join Forest Acres
- News & Announcements
- Report A Concern
- Trash & Recycling

Annex The Acres

forestacres.net/annextheacres



Annex the Acres Coverage



Annex the Acres Success

- Dqqh {hg #5 3 #surs huwlhv#z lwk #p ruh#z dlwlqj #wz # ehfrp h#frqlj xrxv1
- Frqlqxh#wr #xwld}h#vrfldq#p hgld#wr #vsdun#qhz v# vwrulhv#e dvhg #r#g dlo| #sure dnp v#lh=#k xuulfdqh#C hchqh# hp huj hqf | #uhvs rqv#dgg #fchdq #xs 1#
- Iqfuhdvhg #sxeolf#dz duhghvv#derxw#dqgh {dwlrg# ehqhilw#wr #hqruxdj h#qhlj kerukrrg# frqyhuvdwlrgv1

