

The information provided here is for informational and educational purposes and current as of the date of publication. The information is not a substitute for legal advice and does not necessarily reflect the opinion or policy position of the Municipal Association of South Carolina.

Consult your attorney for advice concerning specific situations.



---

---

---

---

---

---

---

---



---

---

---

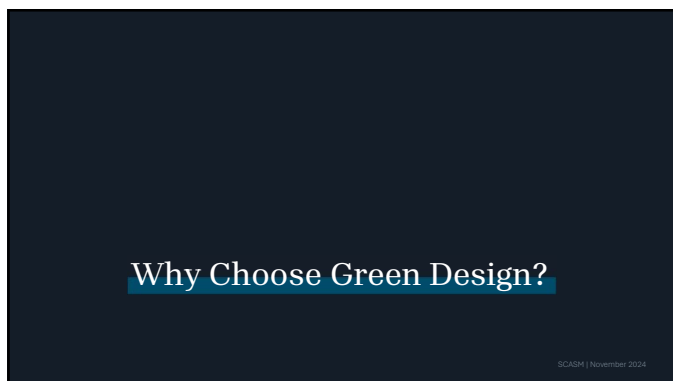
---

---

---

---

---



---

---

---

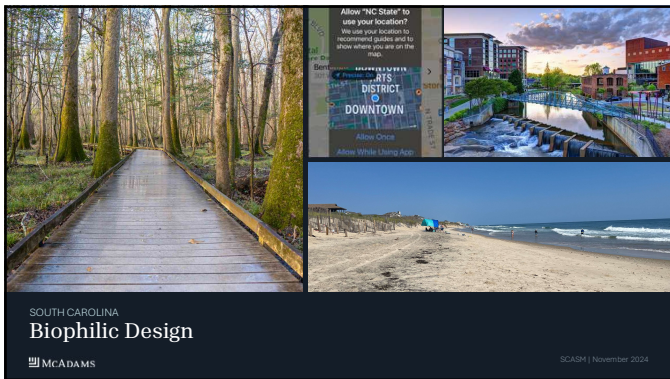
---

---

---

---

---



SOUTH CAROLINA  
**Biophilic Design**

McADAMS

SCAQM | November 2024

---

---

---

---

---

---

---

---

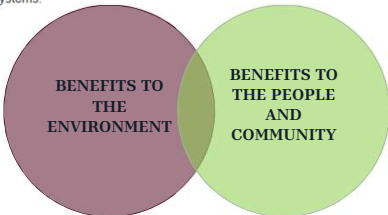
Google

About 1,550,000,000 results (0.65 seconds)

**Benefits of Green Design**

- Reduced environmental impact through material and resource conservation.
- Increased efficiency of heating and cooling systems.
- Reduced operating and utility costs.
- Increased daylight access.
- Enhanced occupant comfort and health.

Feb 13, 2014




---

---

---

---

---

---

---

---



McADAMS

SCAQM | November 2024

---

---

---

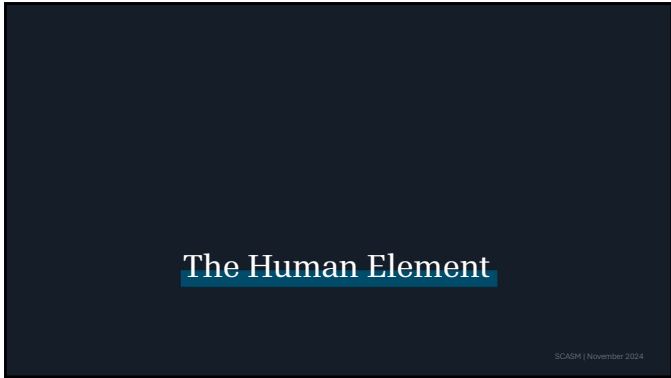
---

---

---

---

---



---

---

---

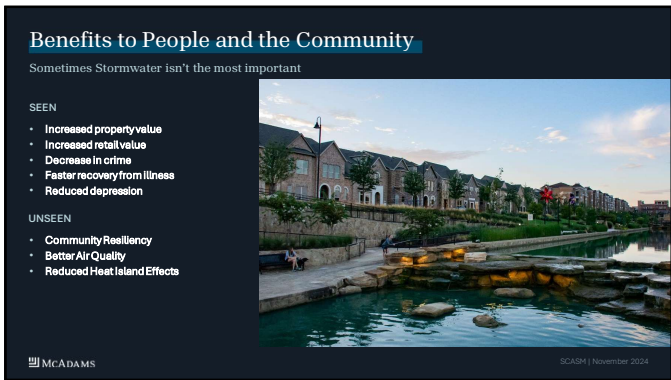
---

---

---

---

---



---

---

---

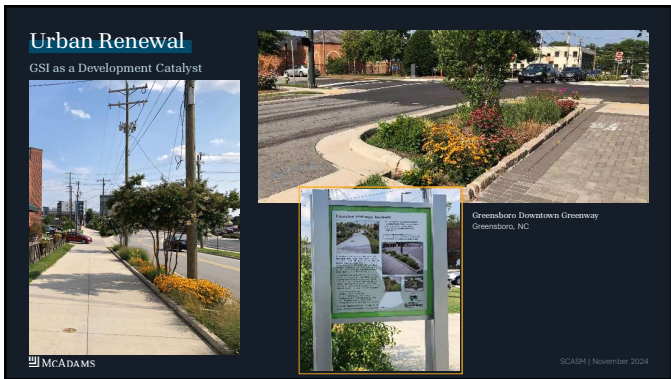
---

---

---

---

---



---

---

---

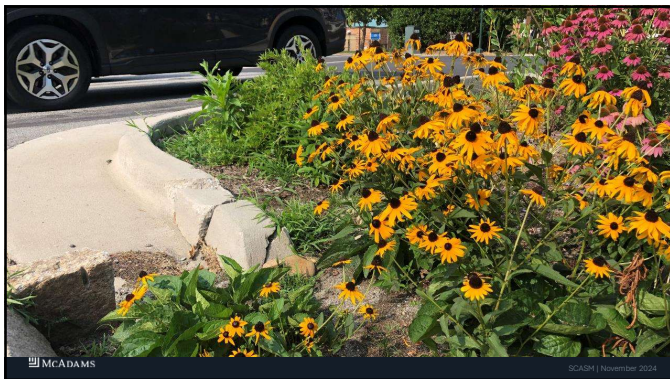
---

---

---

---

---



---

---

---

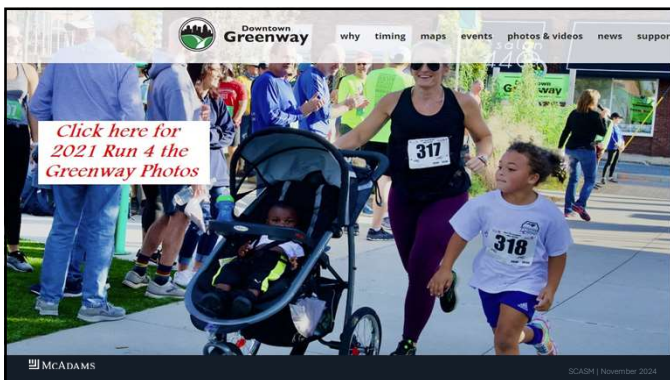
---

---

---

---

---



---

---

---

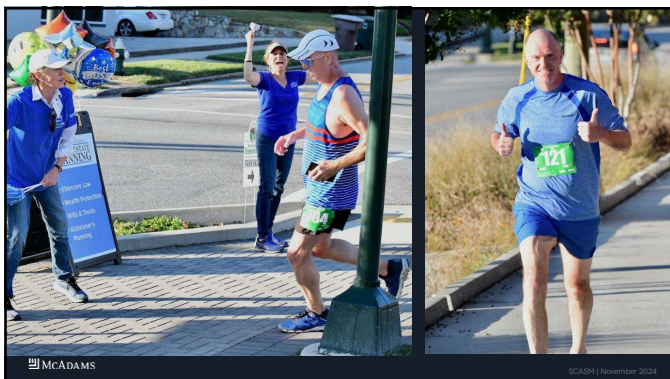
---

---

---

---

---



---

---

---

---

---

---

---

---

# Multifunctional Design

SCASM | November 2024

---

---

---

---

---

---

---


---

## Chatham Park Case Study

Master Planning

COMMUNITY OF TOMORROW?

- | Holistic Stormwater Management Planning
- | Long Term Commitment
- | Property Management
- | Tie-in to Marketing



McADAMS SCASM | November 2024

---

---

---

---


---

---

---

---



## Chatham Park Pillars



THE BIG PICTURE

THE FIVE PILLARS WE STAND FOR

We're creating way more than buildings and roads. Spanning across 2000 acres, we're creating a whole new kind of community. It's these five pillars that inform every planning decision we make, combining for a well-rounded life here.



SCASM | November 2024

---

---

---

---

---

---

---

---



---

---

---

---

---

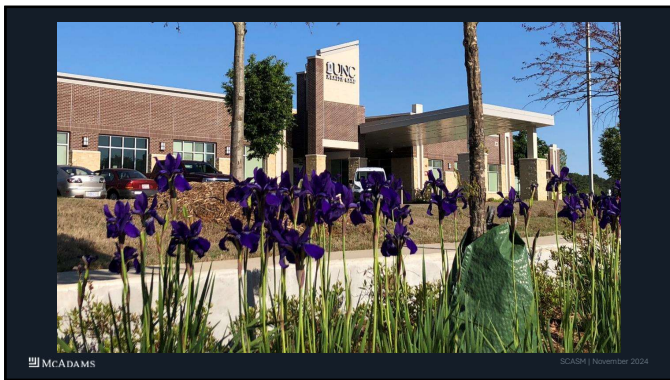
---

---

---

---

---



---

---

---

---

---

---

---

---

---

---



---

---

---

---

---

---

---

---

---

---

DURING A TYPICAL RAINFALL EVENT, ONLY 4,000 gallons OF RAIN WATER IS COLLECTED FROM THE ROOF

CURRENT PROCESS COVERING SHADE TO THE COLLECTED ROOF

UP TO 10,000 gallons OF RAIN WATER CAN BE STORED IN THE TANK BEHIND THE GLASSWALL HOUSE (ABOUT 1/3 OF THE HOUSE) FOR UP TO 1 MONTH

RAIN WATER IS CONDUCTED TO THE STORAGE TANK THROUGH 2 DOWNPIPES AND IS COLLECTED BY THE BUILDING ARCHITECTURE AND 2 FROM THE ROOF

RAIN WATER IS USED FOR IRRIGATION

PLANTS  
SOIL  
STONE  
STORAGE TANK

McADAMS

SCAASH | November 2024

---

---

---

---

---

---

---

---

---

---

McADAMS

SCAASH | November 2024

---

---

---

---

---

---

---

---

---

---

Beaufort Cedar Street  
Public / Public / Non Profit Partnership

McADAMS

SCAASH | November 2024

---

---

---

---

---

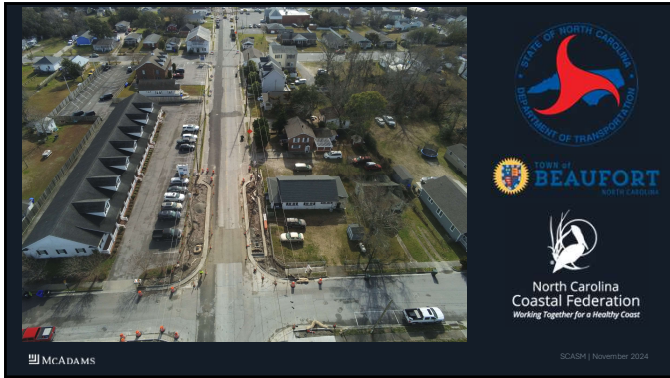
---

---

---

---

---



---

---

---

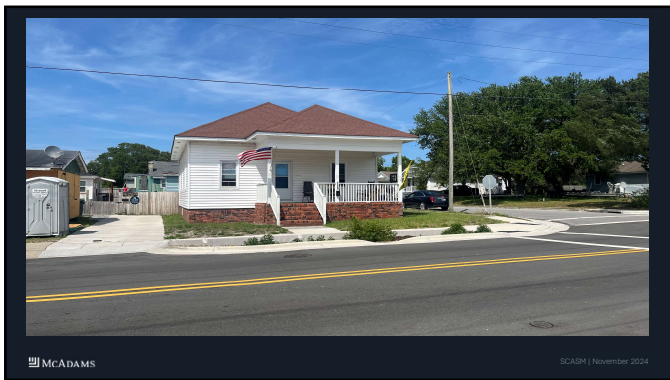
---

---

---

---

---



---

---

---

---

---

---

---

---



---

---

---

---

---

---

---

---






---

---

---

---

---

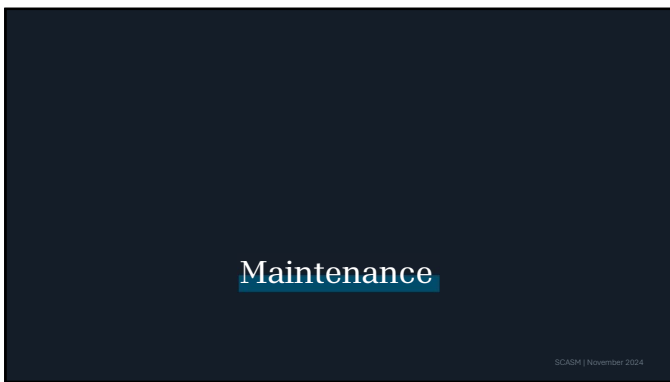
---

---

---

---

---




---

---

---

---

---

---

---

---

---

---




---

---

---

---

---

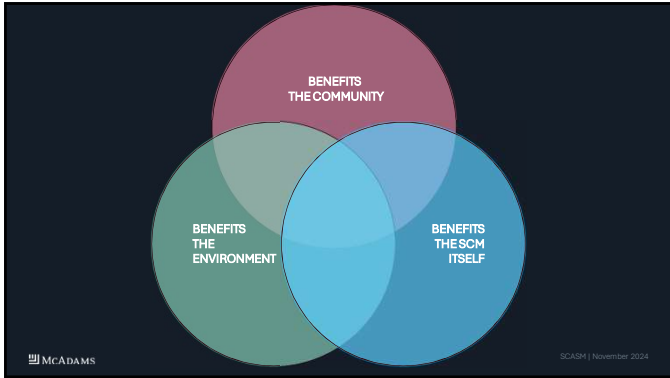
---

---

---

---

---



---

---

---

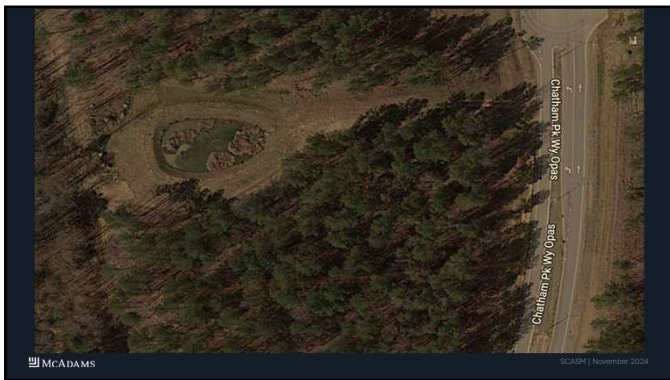
---

---

---

---

---



---

---

---

---

---

---

---

---



---

---

---

---

---

---

---

---




---

---

---

---

---

---

---

---




---

---

---

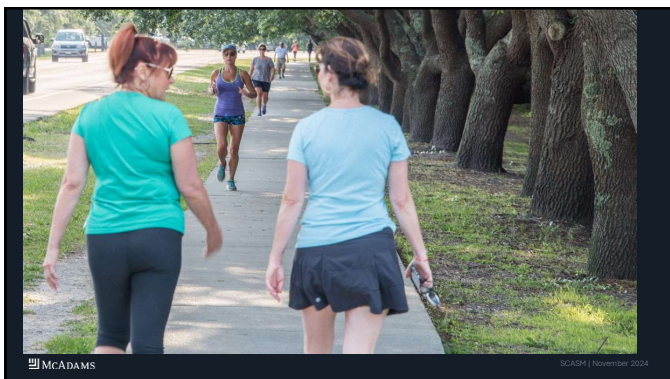
---

---

---

---

---




---

---

---

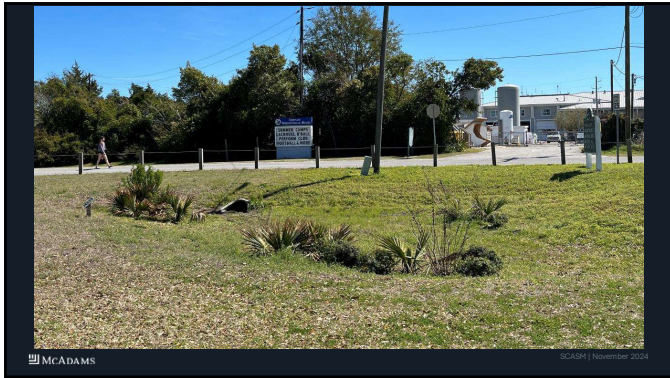
---

---

---

---

---



---

---

---

---

---

---

---

---



---

---

---

---

---

---

---

---



---

---

---

---

---

---

---

---



---

---

---

---

---

---

---


---

### Chatham Park

Implementation

IS GREEN DESIGN PAYING OFF?

- I Increased Demand – more homebuyers
- I Corporate Interest - ESG
- I High Rankings
- I Part of the Regional Story



A circular inset photograph showing a modern building entrance with a large, open-air canopy structure supported by wooden pillars. The building has large windows and is surrounded by trees and landscaping.

McADAMS SCAQM | November 2024

---

---

---

---

---

---

---

---



---

---

---

---

---

---

---

---




---

---

---

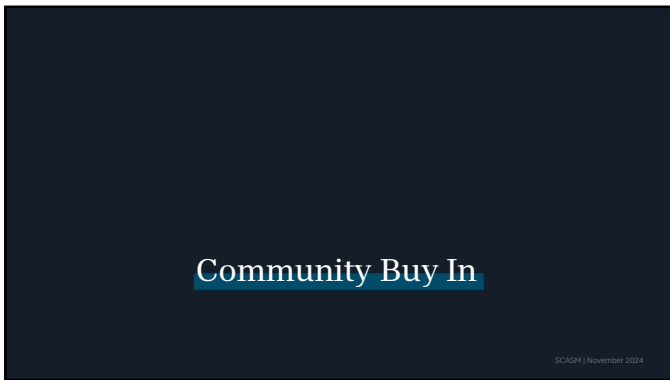
---

---

---

---

---




---

---

---

---


---

---

---


---

Case Study



**Effect of Visibility on Maintenance Investment and Consequent Performance of Urban Stormwater Control Measures**

Sheida Moir, S.M.ASCE<sup>1</sup>; William F. Hunt III, M.ASCE<sup>2</sup>; François Birgand<sup>3</sup>; and Steve Ratzliff<sup>4</sup>



- More frequent maintenance visits
- Quicker detection of major issues
- Higher costs, but higher value

SCASM | November 2024

---

---

---

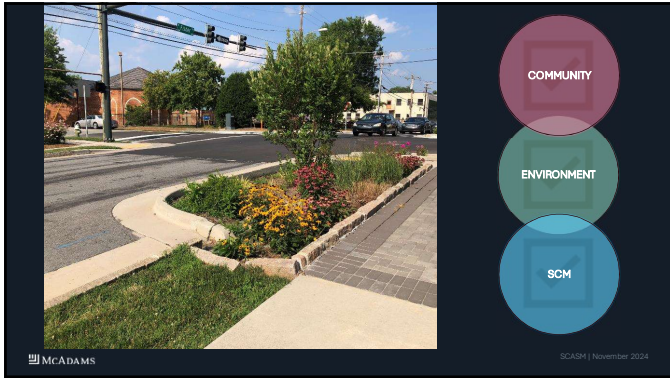
---

---

---

---

---




---

---

---

---

---

---

---

---

### Durham Equity Project

Using GSI for Community Enhancement

WHY IS DURHAM PRIORITIZING GSI?

- I Spearheaded by City Manager
- I Equitable & Green Infrastructure Program
- I Advances City's Water Quality Program
- I Stakeholder Involvement
- I Reduce Flooding in Underserved Neighborhoods
- I Reduce Stream Pollution
- I Improve Connection with Nature
- I Support walking, biking, and outdoor activities
- I NPDES Compliance Support
- I Jordan Lake Watershed Progress

**CITY OF DURHAM**

---

---

---

---

---

---

---

---

**CITY OF DURHAM**

#### What Projects does EGI fund?

EGI Funding is for projects that build or upgrade public or city-owned property. The projects must:

- Be a Construction Project**
- Be on Public Property and Benefit the Public**
- Be Located in an EGI Focus Area**
- Help the Environment**

**Examples of EGI Projects:**

- Adding street trees
- Clearing a clogged creek
- Building/improving bus stop shelters
- Making park improvements
- Adding new streets
- Building central drop-off/collection sites
- Using government materials/vehicles that either reduce fuel or reduce loading in the neighborhood
- Recycling or garbage containers at bus stops
- Repairing sidewalks and trails
- Building/improving crosswalks

**CITY OF DURHAM**

---

---

---

---

---

---

---

---



**HOW RALEIGH INCREASES SCM VISIBILITY**

- | Staff Support
- | Text Changes
- | Ordinance Revisions
- | Design Manual Updates
- | Departmental Coordination
- | Utility Fund Cost Sharing
- | Include Environmental Uplift in Rezoning Conditions
- | Public Involvement

**Advancing Use of Green Stormwater Infrastructure**

Bringing more green, eco-friendly features to Raleigh that help protect waterways

**McADAMS** SCAQM | November 2024

---

---

---

---

---

---

---

---

---

---

**McADAMS** SCAQM | November 2024

---

---

---

---

---

---

---

---

---

---

**OPTIONS FOR GREENING RALEIGH**

**Medium-Density Residential Development Stormwater Management**

**McADAMS** SCAQM | November 2024

---

---

---

---

---

---

---

---

---

---





---

---

---

---

---

---

---

---

---

---



---

---

---

---

---

---

---

---

---

---



---

---

---

---

---

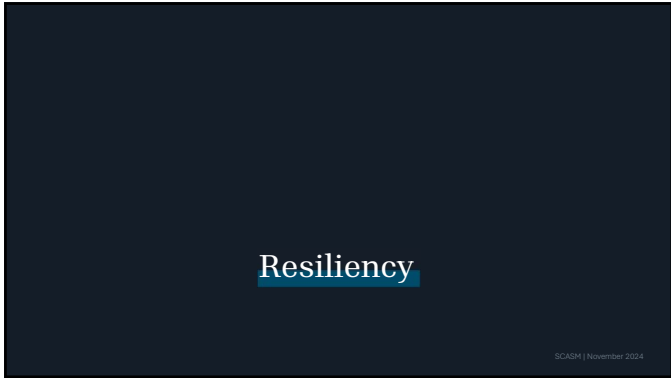
---

---

---

---

---




---

---

---

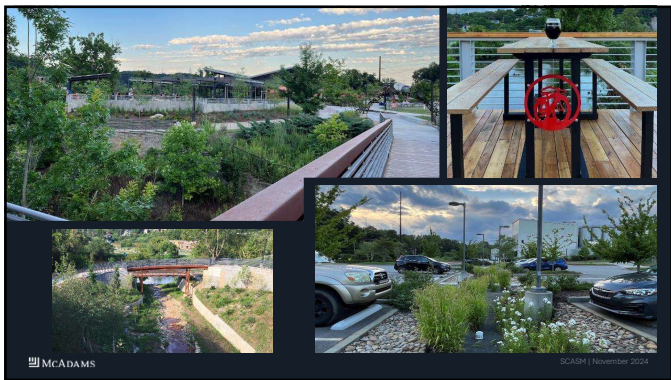
---

---

---

---

---




---

---

---

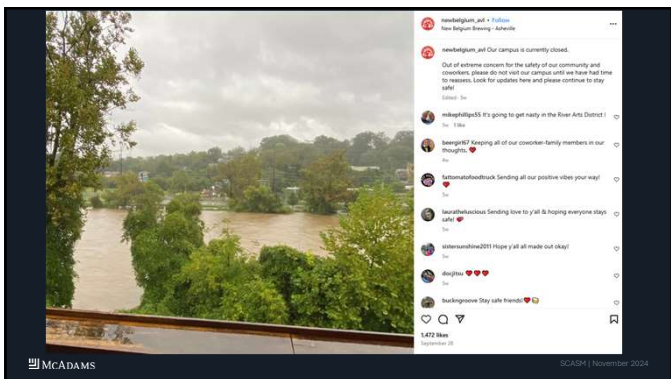
---

---

---

---

---




---

---

---

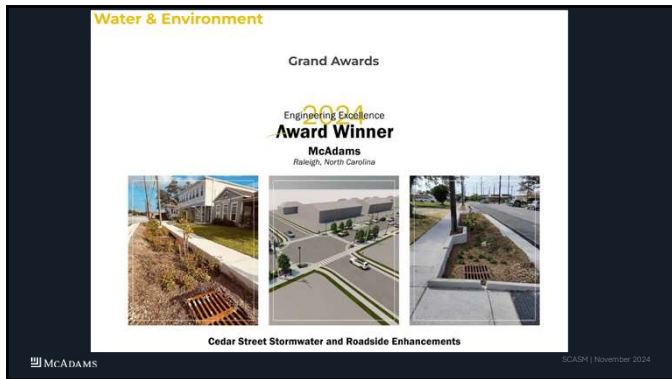
---

---

---

---

---



---

---

---

---

---

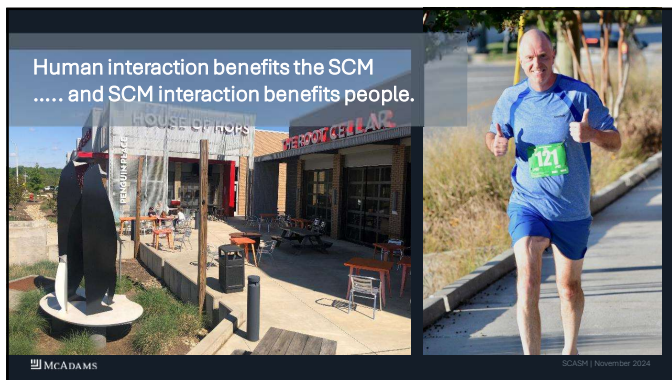
---

---

---

---

---



---

---

---

---

---

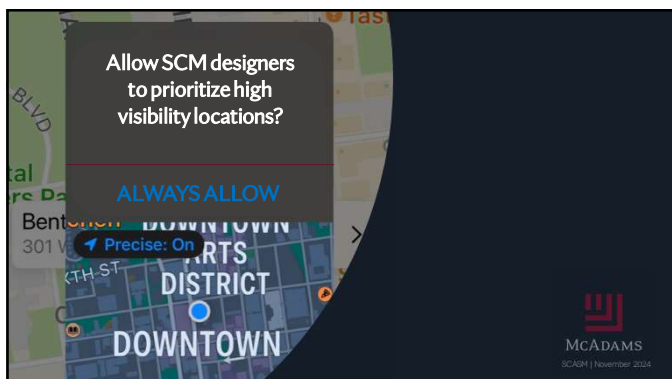
---

---

---

---

---



---

---

---

---

---

---

---

---

---

---



---

---

---

---

---

---

---